

# FS 257

**ELAC**  
FINEST GERMAN ENGINEERING



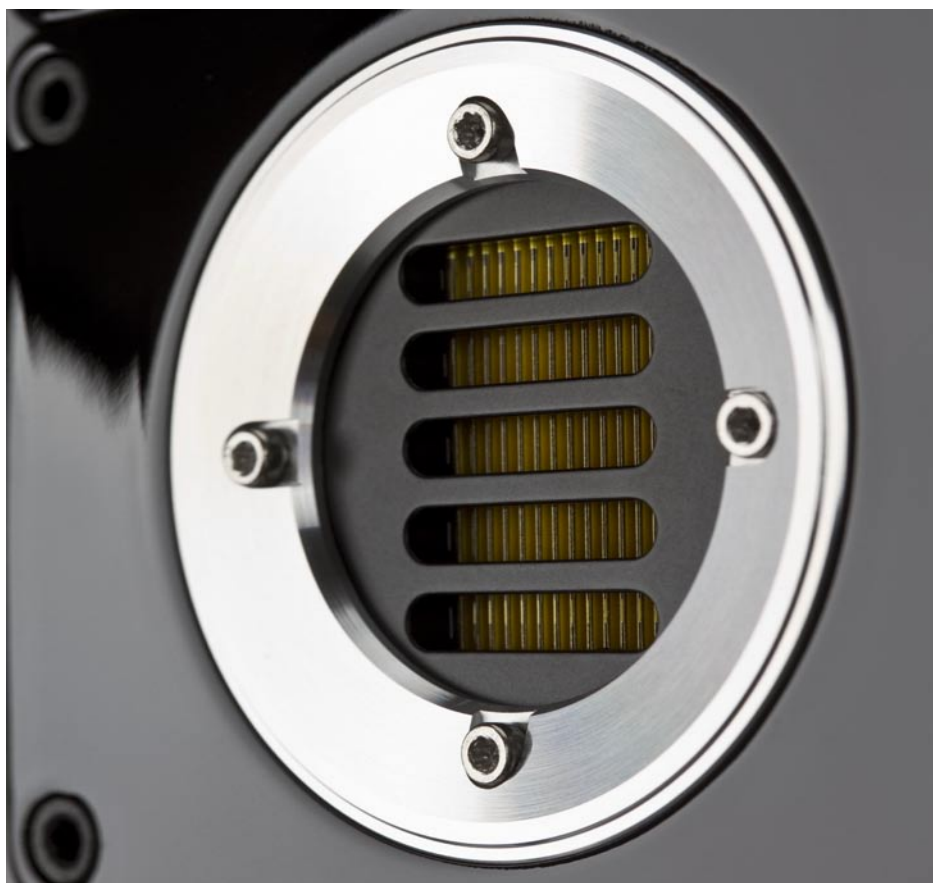
The FS 257 does not compromise on acoustics, looks or technology. The folded foil membrane of the Jet III tweeter is driven by a powerful neodymium rod magnet system. This design moves the air far faster, resulting in extraordinary dynamism and outstanding efficiency. The enlarged sound emission opening of the latest JET III model guarantees an absolutely linear frequency response up to 50 kHz.

Two 150mm crystal membrane cones supply the mid-range. The crystal membranes are constructed from a cellulose cone and specially embossed aluminium foil sandwich, from which they get their name. Bass reflex openings support the chassis in bass reproduction. In combination with the newly developed crossovers, the FS 257 will impress with a neutral, finely marked and completely three-dimensional stereo sound.

# FS 257

## Features

- Very enjoyable foundation of sound, even at high volumes.
- Linear frequency response up to 50 kHz, thanks JET III.
- Superb fine dynamics due to woofers with crystal membrane.
- Magnetically fixed grilles.
- Bass reflex plugs included.
- Attractive, timeless complementary design.



## Specification

Dimensions (inc. grille)	989mm x 170mm x 285mm (H x W x D) 220mm x 285mm Baseplate (W x D)
Weight	16kg
Principle	2.5 way, bass reflex
Woofer	2x 150 mm Ø AS-XR cone
Tweeter	JET III
Crossover filter frequencies	700Hz / 3200Hz
Nominal power handling	120W
Peak power handling	160W
Frequency range (IEC 268-5)	33Hz – 50 000Hz
Sensitivity	88dB for 2.83V at 1m
Amplifier suitability	4 – 8Ω
Nominal impedance	4Ω
Minimum impedance	3.1Ω / 230Hz
Recommended amplifier power	30 – 250W per channel (at nominal impedance)
Available finishes	Black & White High Gloss

ELAC Electroacoustic GmbH  
Rendsburger Landstrasse  
215-24113 Kiel  
Germany

[www.elac.com](http://www.elac.com)

Dealer Details: