

RA280 Top-notch Master Integrated Amplifier

The RA280 is an integrated amplifier that inherits the innovative technologies used in RA180.

Enjoy pure natural sound as close to the original sound as you can get with the RA280, a near-perfect sound that transcends the boundaries between digital and analog technologies with excellent linearity achieved through strong power damping and short dead time.

The RA280 offers a special listening experience that lets you feel the true essence of music.



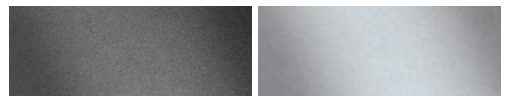


KEY FEATURES

- Class AD Amplifier with Next-Generation GaN FET
- Independently Developed LC Filter by HiFi ROSE
- Highly Efficient and Stable Power Supply
- Powerful 250W Output
- Phono Amplifier for MM
- Bass/Treble Control Volume

DESIGN

- **Dimension** : 430 × 355 × 103 mm
- **Weight** : 9.5kg
- **Material** : Aluminum, Rust-proof Steel
- **Finish** : Black, Silver



MAIN FUNCTION

In/Out Port	Analog In	LINE1, LINE2, LINE3, BALANCED, PHONO(MM)
	Analog Out	Sub Woofer
Speaker Out	4Ω	250W × 2ch (500W)
	8Ω	
Sub Woofer Out	Mono	1Vrms (2.218dBu)