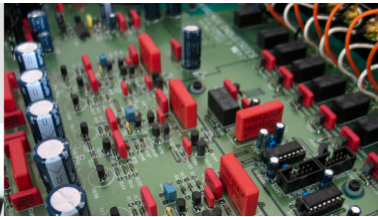


Prisma Series SM6 MkII Balanced Stereo Preamplifier



Your distributor is:

The Prisma Series **SM6 MkII** is a fully balanced stereo preamplifier. Utilising discrete Class-A signal and line stages in a fully balanced topology, the **SM6 MkII** presents music with the realism of the performance itself. With six regulated power supplies the sensitive analogue stages are isolated from all power supply artefacts, allowing dynamic transient attacks to appear from a black background. The wide frequency response of the **SM6 MkII** enables the entire audio spectrum to be portrayed in an articulate manner, ensuring you're not left guessing. As with all Perreaux products, the design is completely solid state, featuring audiophile grade components throughout.

- Class-A signal and line stages
- Fully balanced topology
- Custom shielded toroidal transformer
- Six regulated power supplies
- IR remote control
- Optimal circuit layout for improved noise floor
- Balanced input
- Dual pre-outs
- Enhanced audio design featuring highest quality PCBs
- Balanced output
- High current drive
- Precision digitally controlled analogue volume control
- Wide frequency response
- Stylish



Rated output:

Unbalanced 1.5V_{rms}

Balanced ±1.5V_{rms}

Input sensitivity:

Unbalanced 215mV

Balanced 215mV

Signal to noise ratio: 95dB (unweighted)

Input impedance:

Unbalanced 10k Ohms

Balanced 20k Ohms

Total harmonic distortion:

typically 0.001% @ 1kHz

20Hz–20kHz <0.004%

Frequency response: 20Hz-20kHz ±0.15dB

Audio connections:

RCA & XLR inputs and outputs

Dimensions:

Width: 430mm (16.9")

Height: 106mm (4.2")

Depth: 323mm (12.7")

Net weight: 7.7kg (17.0lb)

For more details please visit our website:

www.perreaux.com

